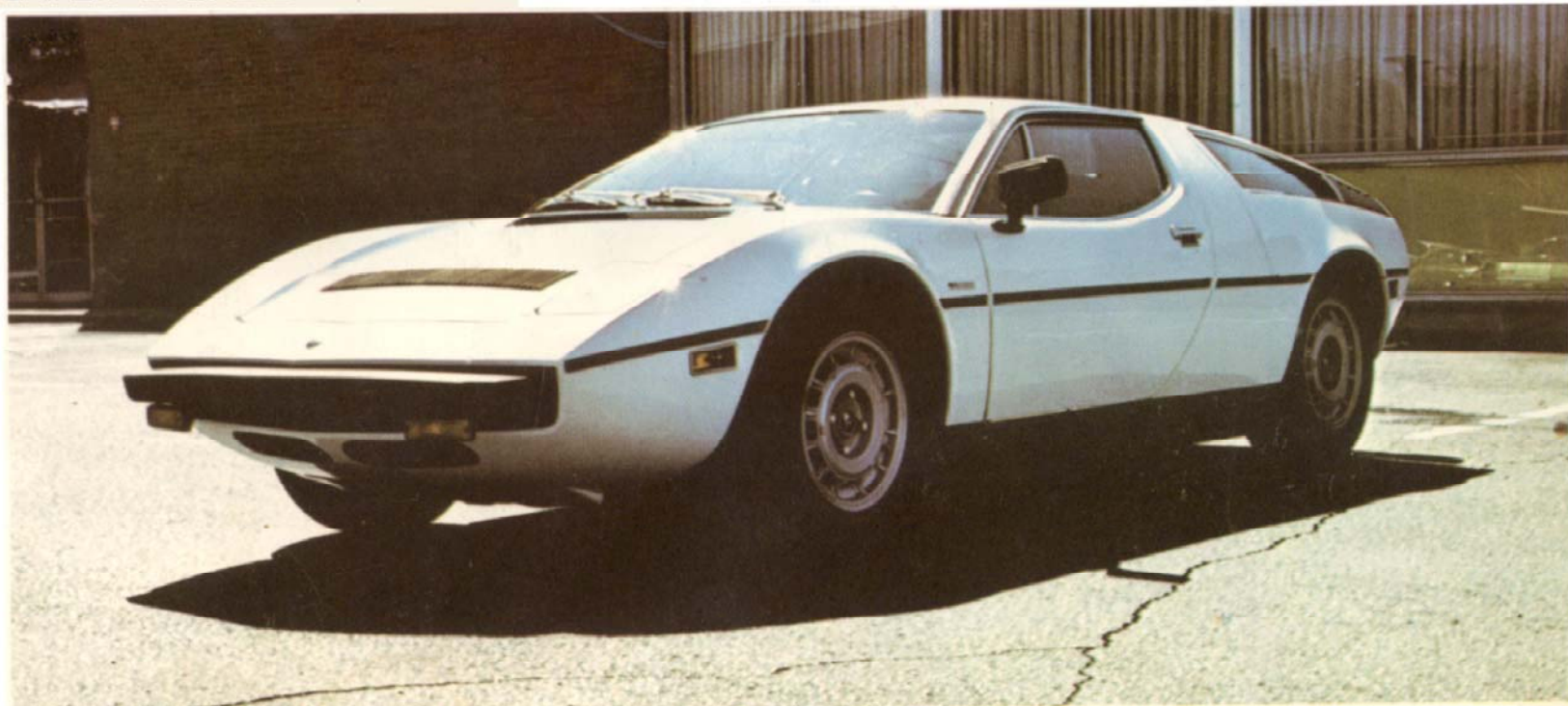


MASERATI BORA



SPECIFICATIONS:

ENGINE:

Type	V-8
Displacement (cu. in.)	301
Carburetion	4-Weber DCNF/14
Compression Ratio	8.5 to 1
Net BHP at RPM	315@5500
Net torque (ft. lbs.) at RPM	310@3500
Catalytic Converter	None

DIMENSIONS:

Wheelbase (in.)	102.3
Overall Length (in.)	181
Overall Width (in.)	69.6
Overall Height (in.)	44.6
Curb Weight (lbs.)	3,570
Headroom—front seat to headliner (in.)	34
Legroom—front floor to front seat back (in.)	43
Front tread (in.)	58
Rear tread (in.)	56.9

CAPACITY:

Fuel tank (U.S. gals.)	25
Cooling system (qts.) with heater	16.9
Crankcase w/filter (qts.)	12

MISCELLANEOUS:

Axle ratio (standard)	3.77
Optional Transmission	M-5
Tire Size	215VRX15
Turning circle (dia. in. ft.)	34'4"

Copyright © 1975 by CBS Publications, The Consumer Publishing Division of CBS Inc.
Reprinted from the January 1975 issue of Road & Track Magazine by permission of the publishers.

Copyright © 1976 by Petersen Publishing Co.
Reprinted by permission of Motor Trend Magazine.